

e-Portfolio@BTC

Bahrain Teachers College

[Home](#) | [Staff Webmail](#) | [Student Webmail](#) | [ePortfolio](#) | [Bla](#)



University of Bahrain
BAHRAIN TEACHERS COLLEGE



[Home](#)

[About BTC](#)

[Programs](#)

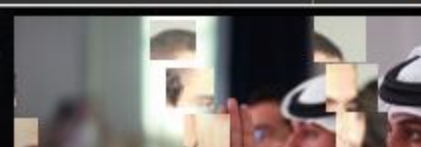
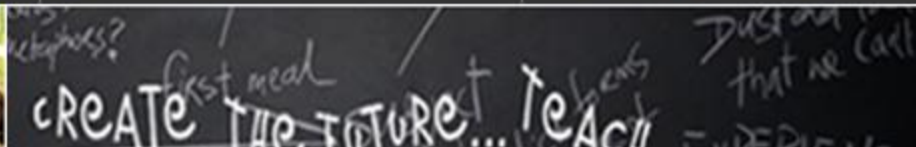
[Admissions](#)

[Services](#)

[Administrative Offices](#)

[Academic Groups](#)

[Recr](#)



e-Portfolio

Help Sessions in Lab 2



10:00–11:30 am

October 2011						
Su	M	Tu	W	Th	F	Sa
						1
2	3	4	5	6	7	8
9	10	11	12	13	14	15
16	17	18	19	20	21	22
23	24	25	26	27	28	29
30	31					

November 2011						
Su	M	Tu	W	Th	F	Sa
		1	2	3	4	5
6	7	8	9	10	11	12
13	14	15	16	17	18	19
20	21	22	23	24	25	26
27	28	29	30			

December 2011						
Su	M	Tu	W	Th	F	Sa
				1	2	3
4	5	6	7	8	9	10
11	12	13	14	15	16	17
18	19	20	21	22	23	24
25	26	27	28	29	30	31

- ▶ October: 20 & 24
- ▶ November: 10, 14, 17, 21, 24, 28
- ▶ December: 1, 5, 8, 12, 15, & 19

▶ 3 simple steps

- ▶ 1. Register using your CPR
 - ▶ 2. Select a username and password
 - ▶ 3. Edit your pages!
- ▶ <http://www.btc.uob.edu.bh/>

Bahrain Teachers College

[Home](#) | [Staff Webmail](#) | [Student Webmail](#) | [ePortfolio](#)



University of Bahrain
BAHRAIN TEACHERS COLLEGE

Search

[Home](#)

[About BTC](#)

[Programs](#)

[Admissions](#)

[Services](#)

[Administrative Offices](#)

[Academic Groups](#)

[R](#)

3 Steps

Bahrain Teachers College



e-Portfolio

Please Login

User Name:

Password:

Log In

Registration

Enter CPR Number

▶ Enter your CPR

▶ Check

▶ Accept

Bahrain Teachers College



e-Portfolio

Please Login

User Name:

Password:

Log In

Registration

CPR Number [921005000] found!
Do you wish to register now?

Yes

No

...Register

1. Complete your profile
2. Select year
3. Select a username and Password! (Be sure it's **one you can remember**)

Personal Information

CPR Number

Salutation

First Name

Second Name

Third Name

Last Name

E-Mail Address

Phone Number

Gender

Additional Information

Flat Number

House Number

Road Number

Block Number

Area

School Details

ID Number

Program/Batch

Specialization

Section

Copyright © chers College. All rights reserved.

Red arrows point from the text 'Complete your profile' to the 'Personal Information' section, from 'Select year' to the 'Program/Batch' dropdown, and from 'Select a username and Password!' to the 'Membership' form below.

Membership **Final Step**

Create Username

Create Password

Re-Type Password

Enter e-Mail Address

Done... 😊

Bahrain Teachers College



e-Portfolio

SEM 1 SY 2011-2012, BED 2009-2010

My Portfolio

- Introduction
- Statement of Philosophy
- Resume/CV

BTC Competencies

- ★ Student Development
- ★ Diverse Learners
- ★ Instructional Strategies
- ★ Learning Environment
- ★ Communication & Instructional Technology
- ★ School, Community, & Civic Engagement

Select competency
& edit!

Guide

Home | Student Development

Save | Close Assessment History

In your own words, briefly discuss your understanding of this competency in the Bahrain context

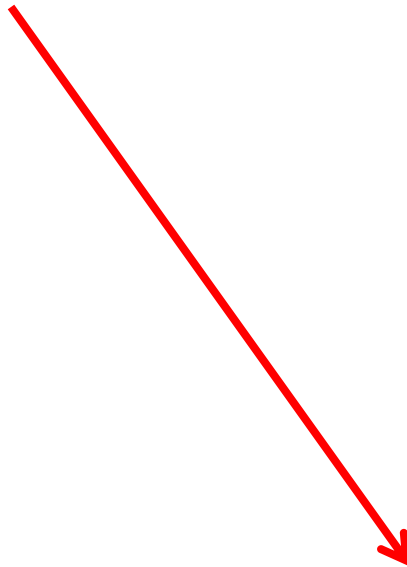
Design HTML Preview

Words: 0 (800 left)

Select the best evidence (artifact) that demonstrates you have achieved this competency. (Attach the artifact and explain what it is and how it relates to the competency described in (a) above).

Questions?

- ▶ Reference – Guidelines!



Bahrain Teachers College



e-Portfolio

SEM 1 SY 2011-2012, BED 2009-2010

My Portfolio

- Introduction
- Statement of Philosophy
- Resume/CV

BTC Competencies

- Student Development
- Diverse Learners
- Instructional Strategies
- Learning Environment
- Communication & Instructional Technology
- School, Community, & Civic Engagement

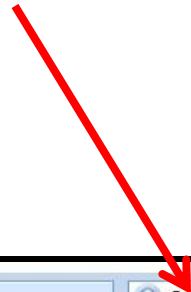
Guidelines

- [Bed Guidelines](#)
- PGDE Guidelines
- BTC Competencies
- BTC Courses

External Links

- MoE PMS Link

More... click on the guide...



SEM 1 SY 2011-2012, BED 2009-2010

My Portfolio

- Introduction
- Statement of Philosophy
- Resume/CV

BTC Competencies

- Student Development
- Diverse Learners
- Instructional Strategies
- Learning Environment
- Communication & Instructional Technology
- School, Community, & Civic Engagement


Other Reflections

Guide

The teacher candidate understands how children learn and develop, and can provide learning opportunities that support a child's intellectual, social, emotional, moral, and general personal development.

The Teacher Candidate:

- evaluates student performance to design instruction appropriate for social, cognitive, emotional, and moral development.
- encourages student reflection on prior knowledge and its connection to new information/knowledge.
- provides opportunities for students to assume responsibility for and be actively engaged in their learning.
- accesses student thinking as a basis for instructional activities through group/individual interaction and written work (listening, encouraging discussion, eliciting samples of student thinking orally and in writing).

[Home](#) | [Student Development](#)  [Edit](#)

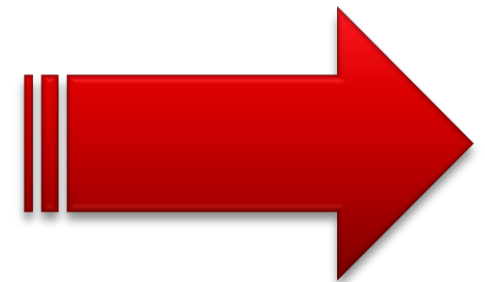
In your own words, briefly discuss your understanding of this competency in the Bahrain context

Select the best evidence (artifact) that demonstrates you have achieved this competency. (Attach the artifact and explain what it is and how it relates to the competency described above)

...Still having....



- ▶ Email: eportfolio@btc.uob.bh
- ▶ Come to **Lab 2**:
- ▶ **Mondays**: 10–11:30
- ▶ **Thursdays**: 10–11:30



e-Portfolio

Help Sessions in Lab 2



10:00–11:30 am

October 2011						
Su	M	Tu	W	Th	F	Sa
						1
2	3	4	5	6	7	8
9	10	11	12	13	14	15
16	17	18	19	20	21	22
23	24	25	26	27	28	29
30	31					

November 2011						
Su	M	Tu	W	Th	F	Sa
		1	2	3	4	5
6	7	8	9	10	11	12
13	14	15	16	17	18	19
20	21	22	23	24	25	26
27	28	29	30			

December 2011						
Su	M	Tu	W	Th	F	Sa
				1	2	3
4	5	6	7	8	9	10
11	12	13	14	15	16	17
18	19	20	21	22	23	24
25	26	27	28	29	30	31

▶ October: 20 & 24

▶ November: 10, 14, 17, 21, 24, 28

▶ December: 1, 5, 8, 12, 15, & 19